

## 24" Pipeline De-burial Works - North Sea



### Project Overview

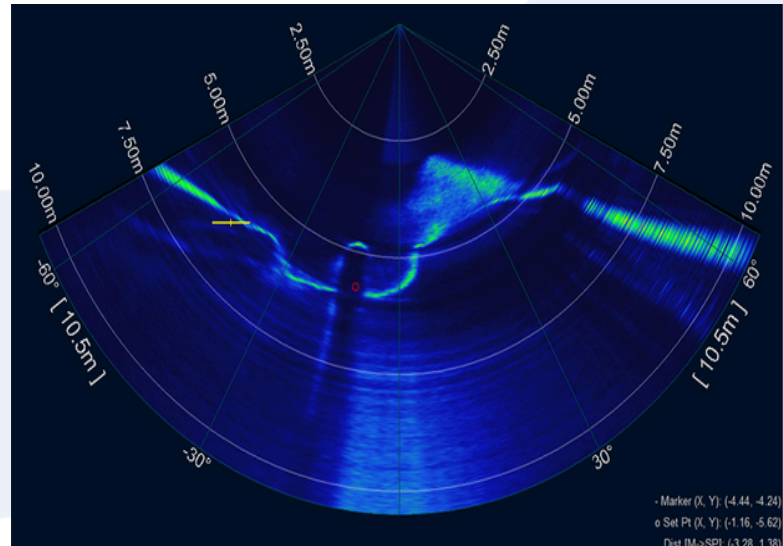
Rotech Subsea was contracted by DeepOcean to undertake pipeline de-burial works on the Thames-Bacton 24-inch gas pipeline. The project involved de-burying approximately 80 metres of pipeline, along with conducting three spot excavations at separate locations to allow access for cutting operations. The pipeline lay buried at a depth of 0.7 metres from the top of pipe to the mean seabed level. Operations were carried out in water depths ranging from 20 to 37 metres LAT. Soil conditions encountered consisted mainly of soft sand, with sections of soft clay.

### The Rotech Solution

Rotech Subsea mobilised its TRS1 CFE tool aboard the Dina Star in July 2021. The TRS1 carried out the de-burial work in two passes, achieving a progress rate of approximately three metres per minute. Due to the soft seabed conditions, rapid natural backfill occurred, necessitating a second pass to maintain an open trench long enough to provide access for the cutting activities.

### Results

The pipeline was exposed to the client's specifications, completing the works efficiently and effectively. Following de-burial, the pipeline was cut and recovered to deck in 10-metre sections. DeepOcean expressed satisfaction with the performance the TRS1. The project marked another successful collaboration for Rotech Subsea, reinforcing its strong working relationship with DeepOcean and paving the way for future collaborations.



### Project Information

**Client:** DeepOcean

**Scope:** Pipeline De-burial

**Water Depth:** 20 - 37 metres LAT

**Soils:** Soft sand & soft clay in some sections

**Currents:** 0.2 - 2.3 knts

**Sea State:** Up to 3m Hs

**Vessel:** Dina Star